



Test Report

Report No. A220009927610103

Page 1 of 10

Applicant KINGTRONICS INTERNATIONAL COMPANY
Address ROOM H, FLOOR 4, 13 YIP FUNG STREET, HONG KONG

The following sample(s) and sample information was/were submitted and identified by/on the behalf of the client

Sample No.	Sample Name(s)
001	Chip MLCC Multilayer Ceramic Capacitors
002	Axial & Radial Multilayer Ceramic Capacitors
003	Axial & Radial Multilayer Ceramic Capacitors
004	Color Ring Capacitors
005	Axial & Radial Monolithic Ceramic Capacitors

Sample Received Date Apr. 20, 2020
Testing Period Apr. 20, 2020 to Apr. 23, 2020

Test Requested As specified by client, to test Lead(Pb), Cadmium(Cd), Mercury(Hg), Hexavalent Chromium(Cr(VI)), Polybrominated Biphenyls(PBBs), Polybrominated Diphenyl Ethers (PBDEs), Phthalates (DBP, BBP, DEHP, DIBP) in the submitted sample(s).

Test Method/Test Result(s) Please refer to the following page(s).

Tested by Guoqing Dai Reviewed by Guang Feng

Approved by Wenjun Wang Date Apr. 23, 2020



Wenjun Wang
Technical Director

No. R186111042

Yongying Building, Section 2, No.8, East of Rongqi Avenue, Ronggui, Shunde District, Foshan, Guangdong, China

Test Report

Report No. A220009927610103

Page 2 of 10

Test Method

Tested Item(s)	Test Method	Measured Equipment(s)
Lead(Pb)	IEC 62321-5:2013	ICP-OES
Cadmium(Cd)	IEC 62321-5:2013	ICP-OES
Mercury(Hg)	IEC 62321-4:2013+AMD1:2017 CSV	ICP-OES
Hexavalent Chromium(Cr(VI))	IEC 62321-7-1:2015	UV-Vis
	IEC 62321-7-2:2017 and/or determination of Total Chromium by IEC 62321-5:2013	UV-Vis/ICP-OES
Polybrominated Biphenyls(PBBs)	IEC 62321-6:2015	GC-MS
Polybrominated Diphenyl Ethers (PBDEs)	IEC 62321-6:2015	GC-MS
Phthalates (DBP, BBP, DEHP, DIBP)	IEC 62321-8:2017	GC-MS

Test Result(s)

Tested Item(s)	Result			MDL
	001	002	003	
Lead (Pb)	N.D.	N.D.	N.D.	2 mg/kg
Cadmium (Cd)	N.D.	N.D.	N.D.	2 mg/kg
Mercury (Hg)	N.D.	N.D.	N.D.	2 mg/kg
Hexavalent Chromium (Cr(VI))	N.D.	N.D.	--	8 mg/kg
	--	--	N.D.▼	0.10 µg/cm ² (LOQ)

Tested Item(s)	Result		MDL
	004	005	
Lead (Pb)	N.D.	N.D.	2 mg/kg
Cadmium (Cd)	N.D.	N.D.	2 mg/kg
Mercury (Hg)	N.D.	N.D.	2 mg/kg
Hexavalent Chromium (Cr(VI))	N.D.	N.D.	8 mg/kg

Test Report

Report No. A220009927610103

Page 3 of 10

Tested Item(s)	Result			MDL
	001	002	003	
Polybrominated Biphenyls(PBBs)				
Monobromobiphenyl	N.D.	N.D.	N.D.	5 mg/kg
Dibromobiphenyl	N.D.	N.D.	N.D.	5 mg/kg
Tribromobiphenyl	N.D.	N.D.	N.D.	5 mg/kg
Tetrabromobiphenyl	N.D.	N.D.	N.D.	5 mg/kg
Pentabromobiphenyl	N.D.	N.D.	N.D.	5 mg/kg
Hexabromobiphenyl	N.D.	N.D.	N.D.	5 mg/kg
Heptabromobiphenyl	N.D.	N.D.	N.D.	5 mg/kg
Octabromobiphenyl	N.D.	N.D.	N.D.	5 mg/kg
Nonabromobiphenyl	N.D.	N.D.	N.D.	5 mg/kg
Decabromobiphenyl	N.D.	N.D.	N.D.	5 mg/kg

Tested Item(s)	Result		MDL
	004	005	
Polybrominated Biphenyls(PBBs)			
Monobromobiphenyl	N.D.	N.D.	5 mg/kg
Dibromobiphenyl	N.D.	N.D.	5 mg/kg
Tribromobiphenyl	N.D.	N.D.	5 mg/kg
Tetrabromobiphenyl	N.D.	N.D.	5 mg/kg
Pentabromobiphenyl	N.D.	N.D.	5 mg/kg
Hexabromobiphenyl	N.D.	N.D.	5 mg/kg
Heptabromobiphenyl	N.D.	N.D.	5 mg/kg
Octabromobiphenyl	N.D.	N.D.	5 mg/kg
Nonabromobiphenyl	N.D.	N.D.	5 mg/kg
Decabromobiphenyl	N.D.	N.D.	5 mg/kg

Test Report

Report No. A220009927610103

Page 4 of 10

Tested Item(s)	Result			MDL
	001	002	003	
Polybrominated Diphenyl Ethers (PBDEs)				
Monobromodiphenyl ether	N.D.	N.D.	N.D.	5 mg/kg
Dibromodiphenyl ether	N.D.	N.D.	N.D.	5 mg/kg
Tribromodiphenyl ether	N.D.	N.D.	N.D.	5 mg/kg
Tetrabromodiphenyl ether	N.D.	N.D.	N.D.	5 mg/kg
Pentabromodiphenyl ether	N.D.	N.D.	N.D.	5 mg/kg
Hexabromodiphenyl ether	N.D.	N.D.	N.D.	5 mg/kg
Heptabromodiphenyl ether	N.D.	N.D.	N.D.	5 mg/kg
Octabromodiphenyl ether	N.D.	N.D.	N.D.	5 mg/kg
Nonabromodiphenyl ether	N.D.	N.D.	N.D.	5 mg/kg
Decabromodiphenyl ether	N.D.	N.D.	N.D.	5 mg/kg

Tested Item(s)	Result		MDL
	004	005	
Polybrominated Diphenyl Ethers (PBDEs)			
Monobromodiphenyl ether	N.D.	N.D.	5 mg/kg
Dibromodiphenyl ether	N.D.	N.D.	5 mg/kg
Tribromodiphenyl ether	N.D.	N.D.	5 mg/kg
Tetrabromodiphenyl ether	N.D.	N.D.	5 mg/kg
Pentabromodiphenyl ether	N.D.	N.D.	5 mg/kg
Hexabromodiphenyl ether	N.D.	N.D.	5 mg/kg
Heptabromodiphenyl ether	N.D.	N.D.	5 mg/kg
Octabromodiphenyl ether	N.D.	N.D.	5 mg/kg
Nonabromodiphenyl ether	N.D.	N.D.	5 mg/kg
Decabromodiphenyl ether	N.D.	N.D.	5 mg/kg

Test Report

Report No. A220009927610103

Page 5 of 10

Tested Item(s)	Result			MDL
	001	002	003	
Phthalates (DBP, BBP, DEHP, DIBP)				
Butyl benzyl phthalate (BBP) CAS#:85-68-7	N.D.	N.D.	N.D.	50 mg/kg
Di-(2-ethylhexyl) phthalate (DEHP) CAS#:117-81-7	N.D.	N.D.	N.D.	50 mg/kg
Dibutyl phthalate (DBP) CAS#:84-74-2	N.D.	N.D.	N.D.	50 mg/kg
Diisobutyl phthalate (DIBP) CAS#:84-69-5	N.D.	N.D.	N.D.	50 mg/kg

Tested Item(s)	Result		MDL
	004	005	
Phthalates (DBP, BBP, DEHP, DIBP)			
Butyl benzyl phthalate (BBP) CAS#:85-68-7	N.D.	N.D.	50 mg/kg
Di-(2-ethylhexyl) phthalate (DEHP) CAS#:117-81-7	N.D.	N.D.	50 mg/kg
Dibutyl phthalate (DBP) CAS#:84-74-2	N.D.	N.D.	50 mg/kg
Diisobutyl phthalate (DIBP) CAS#:84-69-5	N.D.	N.D.	50 mg/kg

Sample/Part Description

- 001 Brown body(Tested as a whole)
- 002 Yellow body with brown printing(Tested as a whole)
- 003 Metal with silvery plating
- 004 Yellow body with multi-color ink(Tested as a whole)
- 005 Yellow body(Tested as a whole)

Test Report

Report No. A220009927610103

Page 6 of 10

Remark: -The sample(s) had been dissolved totally tested for Lead, Cadmium, Mercury.
-The sample(s) 001,002,004,005 was tested as a whole, because it's impossible to disassemble or separate it by current equipment and technology. The result(s) shown on this report may be different from the content of any homogeneous material.
-MDL = Method Detection Limit
-N.D. = Not Detected (<MDL or LOQ)
-mg/kg = ppm = parts per million
-1000 mg/kg = 0.1%
-LOQ = Limit of Quantification, The LOQ of Hexavalent chromium is 0.10 $\mu\text{g}/\text{cm}^2$
-▼The sample is negative for Cr(VI) – The Cr(VI) concentration is below 0.10 $\mu\text{g}/\text{cm}^2$. The coating is considered a non-Cr(VI) based coating.
The test result(s) of this report is/are presented in reference to the result(s) that reported in A2200099276101.

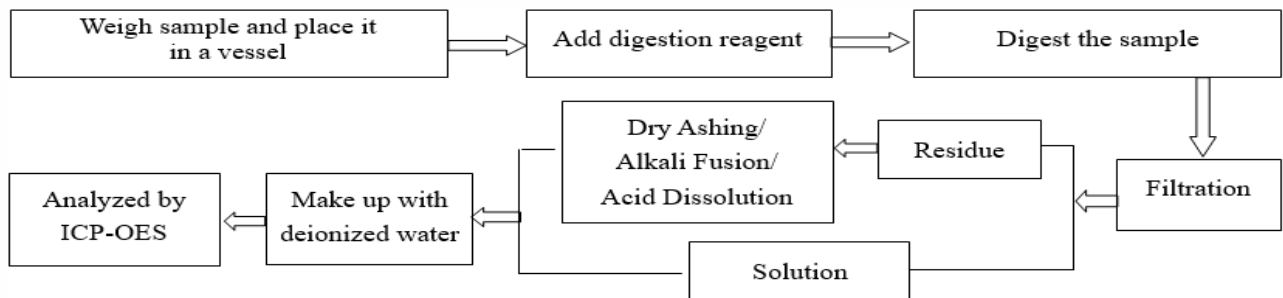
Test Report

Report No. A220009927610103

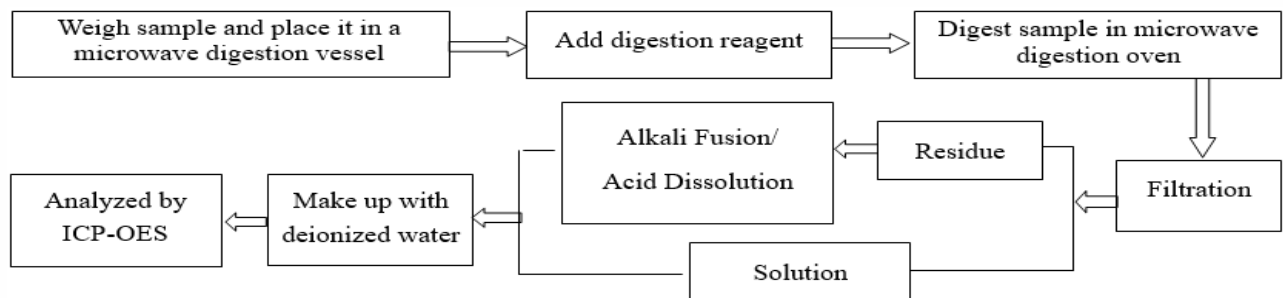
Page 7 of 10

Test Process

1. Lead(Pb), Cadmium(Cd), Chromium(Cr)

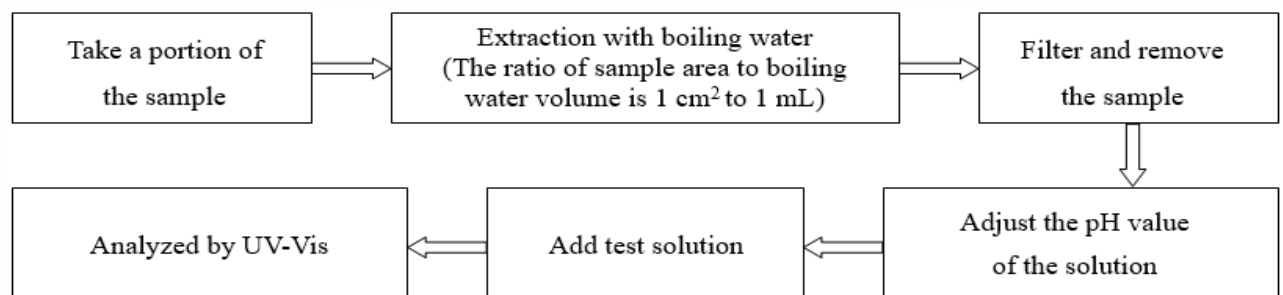


2. Mercury(Hg)

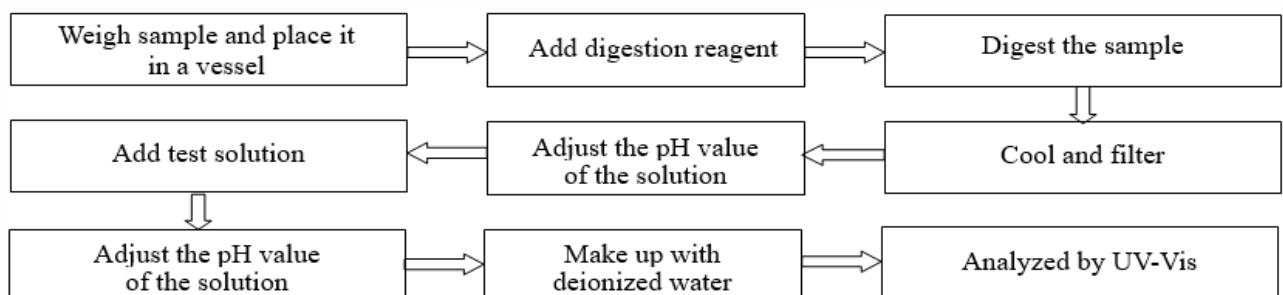


3. Hexavalent Chromium(Cr(VI))

(1) IEC 62321-7-1:2015



(2) IEC 62321-7-2:2017

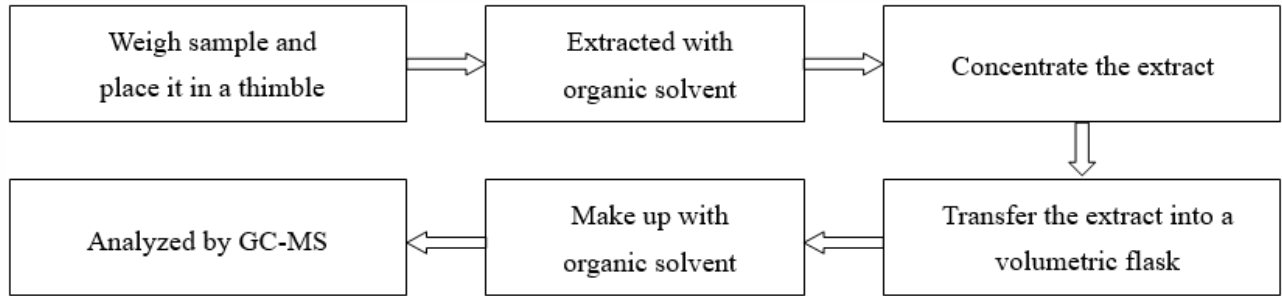


Test Report

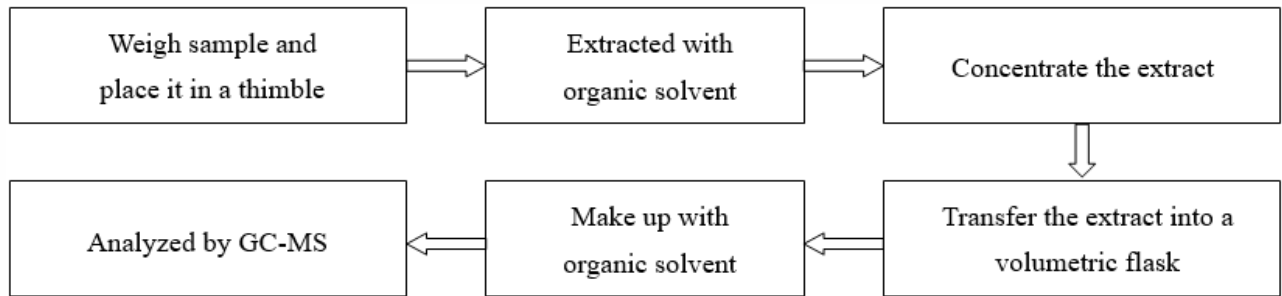
Report No. A220009927610103

Page 8 of 10

4. Polybrominated Biphenyls(PBBs), Polybrominated Diphenyl Ethers (PBDEs)



5. Phthalates (DBP, BBP, DEHP, DIBP)



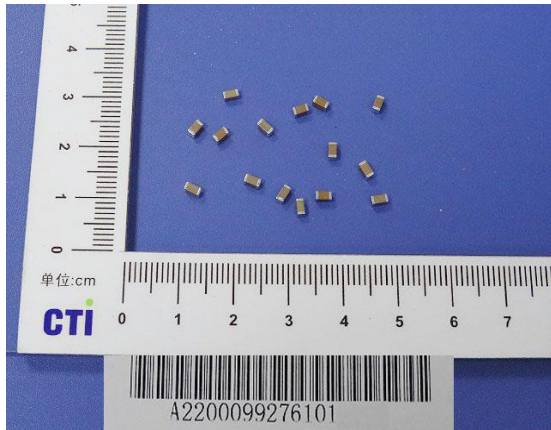
Test Report

Report No. A220009927610103

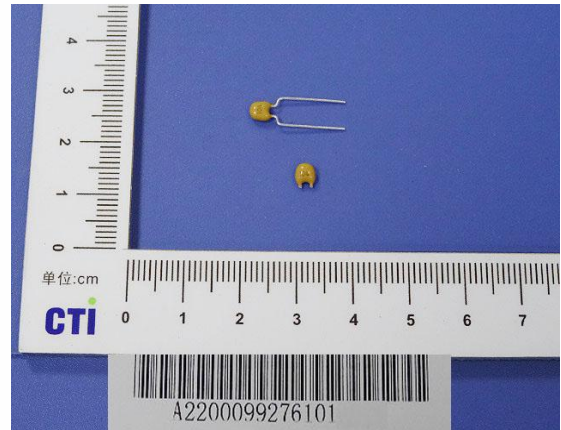
Page 9 of 10

Photo(s) of the sample(s)

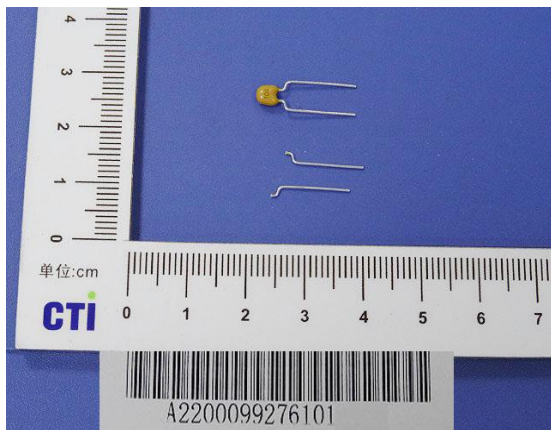
001



002



003



004



Test Report

Report No. A220009927610103

Page 10 of 10

005



*** End of Report ***

Statement:

1. This report is considered invalid without approved signature, special seal and the seal on the perforation;
2. The sample(s) and sample information was/were provided by the client who should be responsible for the authenticity which CTI hasn't verified;
3. The result(s) shown in this report refer(s) only to the sample(s) tested;
4. Without written approval of CTI, this report can't be reproduced except in full;
5. In case of any discrepancy between the English version and Chinese version of the testing reports (if generated), the Chinese version shall prevail.