

Kingtronics®

RKT-3590

Trimming Potentiometers

FEATURES

- Multiturn/ Round/ Wirewound
- 2 Shaft Styles

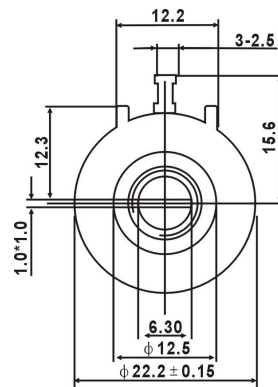
PICTURE



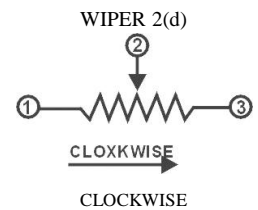
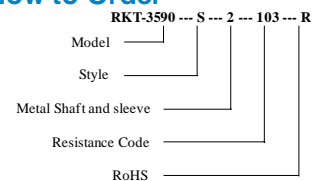
Electrical Characteristics

| | |
|-----------------------------|--------------------------------------|
| Standard Resistance Range | 1KΩ - 100KΩ |
| Resistance Tolerance | ±5% |
| Independent Linearity | ±0.5% |
| Effective Electrical Travel | ≥3600° ± 10° |
| Terminal Resistance | ≤2% R or 5Ω (whichever is larger) |
| Noise | ≤3% R or 5Ω (whichever is larger) |
| Insulation Resistance | R ≥ 1GΩ |
| Withstand Voltage | 101.3kPa710V, 8.5kPa470V |

Common Dimensions



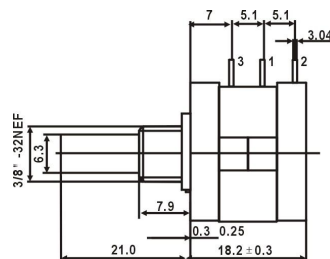
How to Order



Tolerance is ±0.25 if no identification

Environmental Characteristics

| | |
|------------------------------|---|
| Power Rating (500volts max) | 2W@+70°C, 0W@+125°C |
| Temperature Range | -55°C ~ +125°C |
| Temperature Coefficient | ≤±50×10 ⁻⁶ /°C (-55°C ~ +125°C) |
| Temperature Variation | ΔR≤±2%R, Δ(Uab/Uac)≤±1% |
| Collision | 390m/s ² , 4000cycles, R≤1%R |
| Vibration | 10-500Hz, 0.75mm, or 98m/s ² , 6h ΔR≤±1%R, Δ(Uab/Uac)≤±2% |
| Climate Category | ΔR≤±3%R, R _i ≥100MΩ |
| Electrical Endurance at 70°C | 2W, 1000h, ΔR≤±3%R |
| Mechanical Endurance | 10000 cycles, ΔR≤±3%R |
| Steady damp-heat | ΔR≤±3%R, R _i ≥100MΩ |



Resistance Table

| Resistance (Ohms) | Resistance Code |
|-------------------|-----------------|
| 1,000 | 102 |
| 2,000 | 202 |
| 5,000 | 502 |
| 10,000 | 103 |
| 20,000 | 203 |
| 50,000 | 503 |
| 100,000 | 104 |

Special resistances available.

Physical Characteristics

| | |
|-------------------------|------------------------|
| Total Mechanical Travel | ≥3600° ± 10° |
| Starting Torque | ≤36mN·m |
| Clutch Torque | ≥300mN·m |
| Standard Packaging | 20pcs/box or 25pcs/box |

Kingtronics® International Company

Website: www.kingtronics.com Email: info@kingtronics.com Tel: (852) 8106 7033 Fax: (852) 8106 7099