

Kingtronics®

RKT-3306

Trimming Potentiometers

FEATURES

Single-Turn / Cermet / Industrial / Open Frame

2 Terminal Styles

PICTURE



Electrical Characteristics

Standard Resistance Range	100Ω - 1MΩ
Resistance Tolerance	±25% std
Terminal Resistance	≤±1%R (R>2KΩ) ≤20Ω (100Ω≤R≤2KΩ)
Contact Resistance Variation	(CRV)≤3%R
Resolution	Essentially infinite
Adjustment Angle	215 °±15 °

Environmental Characteristics

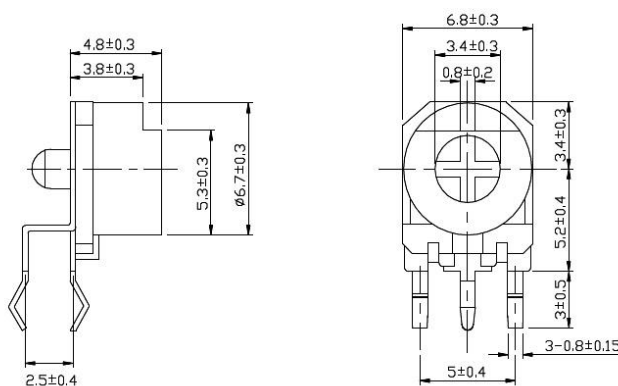
Power Rating	0.2W (70°C)
Temperature Range	-30°C ~ +100°C
Temperature Coefficient	±250ppm/°C
Load Life (0.2W, 1000h, 70°C)	ΔR≤±(5%R+0.1 Ω)
Rotational Life (200cycles)	ΔR≤±(10%R+0.5 Ω)

Physical Characteristics

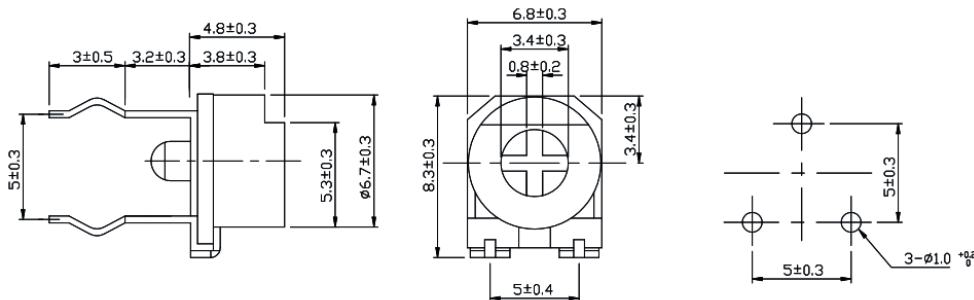
Mechanical Angle	260 °±15 °
Starting Torque	≤35mN.m
Stop Strength	>50mN.m
Standard packaging	200pcs. Per bag

Common Dimensions

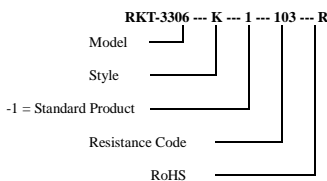
RKT-3306K



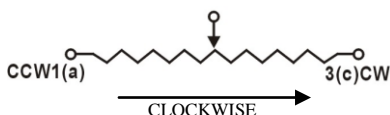
RKT-3306F



How to Order



WIPER 2(b)



Note: Specifications are subject to change without notice.

Resistance Table

Resistance(Ohms)	Resistance Code
100	101
200	201
500	501
1,000	102
2,000	202
5,000	502
10,000	103
20,000	203
25,000	253
50,000	503
100,000	104
200,000	204
250,000	254
500,000	504
1,000,000	105

Special resistances are available.

Kingtronics® International Company