

Kingtronics®

RKT-3224

Trimming Potentiometers

FEATURES

- Multi-loop/Glass glaze/Seal
- Surface mounted /4mm square

Electrical Characteristics

Standard Resistance Range	10Ω - 1MΩ
Resistance Tolerance	±10%
Absolute Minimum Resistance	≤1%R or 2Ω
Contact Resistance Variation	CRV≤3% or 3Ω (whichever is larger)
Insulation Resistance	R1≥1GΩ(100Vac)
Withstand Voltage	101.3 kPa 600V · 8.5 kPa 250V
Effective Travel	11±2 turns nom

Environmental Characteristics

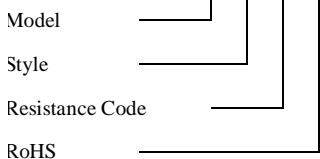
Power Rating (200volts max)	+70°C 0.25W · +125°C 0W
Temperature Range	-55°C ~ +125°C
Temperature Coefficient	±250ppm/°C
Temperature Variation	R _s ±2%R · Δ(Uab/Uac)≤±1%
Vibration	10 – 500Hz, 0.75mm, 6h ΔR _s ±1%R · Δ(Uab/Uac)≤±2%
Collision	390m/s ² , 4000cycles, ΔR _s ≤±1%R
Electrical Endurance at 70°C	0.25W, 1000h, ΔR _s ≤±3%R
Rotation 1 Life	200 cycles ΔTR≤10%R, CRV≤3% or 5Ω (whichever is larger)

Physical Characteristics

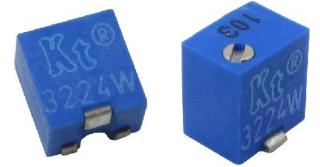
Starting Torque	≤25mN·m
Marking	Resistance Tolerance (When no identification, it is of ± 10%) Resistance Code, Model
Standard Packaging	250pcs, per tape reel

How to Order

RKT-3224 --- W --- 103 --- R

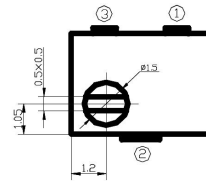
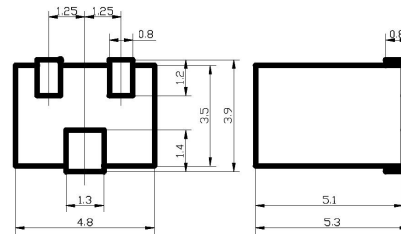


PICTURE

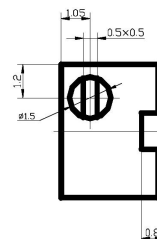
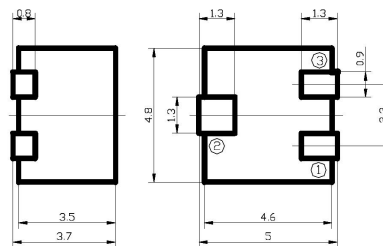


Common Dimensions (mm)

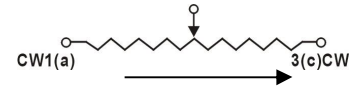
RKT-3224W



RKT-3224J



WIPER 2(d)



CLOCKWISE

Tolerance is ±0.25 if no identification

Resistance Table

Resistance (Ohms)	Resistance Code
10	100
20	200
50	500
100	101
200	201
500	501
1,000	102
2,000	202
5,000	502
10,000	103
20,000	203
25,000	253
50,000	503
100,000	104
200,000	204
250,000	254
500,000	504
1,000,000	105

Note: Specifications are subject to change without notice.

Special resistances available.

Kingtronics® International Company