

Kingtronics®

KBPC15005 THRU KBPC1510

SINGLE-PHASE GLASS PASSIVATED BRIDGE RECTIFIERS

REVERSE VOLTAGE 50 to 1000 Volts **FORWARD CURRENT** 15.0 Ampere

FEATURES

High forward surge current capability
 Low thermal resistance
 High isolation voltage from case to leads
 High temperature soldering guaranteed:
 260°C /10 second, at 5 lbs. (2.3kg) tension.

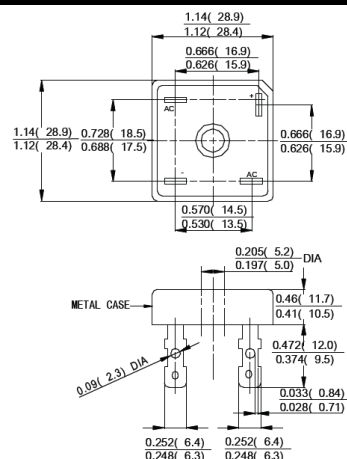
MECHANICAL DATA

Case: Metal case
 Terminal: Plated 0.25" (6.35mm) lug
 Polarity: Polarity symbols molded on case
 Mounting: Thru hole for #10 screw, 20 in,- lbs. Torque Max
 Weight: 1.02 ounce, 29 gram

MAXIMUM RATINGS AND ELECTRICAL CHARACTERISTICS

Ratings at 25°C ambient temperature unless otherwise specified ,
 Single phase, half wave, 60Hz, resistive or inductive load.
 For capacitive load derate current by 20%

Dimensions in inches and (millimeters)



PARAMETER	SYMBOL	KBPC 15005	KBPC 1501	KBPC 1502	KBPC 1504	KBPC 1506	KBPC 1508	KBPC 1510	UNIT
Maximum Repetitive Peak Reverse Voltage	V_{RRM}	50	100	200	400	600	800	1000	Volts
Maximum RMS Voltage	V_{RRM}	35	70	140	280	420	560	700	Volts
Maximum DC Blocking Voltage	V_{DC}	50	100	200	400	600	800	1000	Volts
Maximum Average Forward Rectified Output Current, at $T_C=50^\circ C$ (Note 1,2)	$I_{(VA)}$	15							Amps
Peak Forward Surge Current 8.3ms Single half sine-wave superimposed on rated load (JEDEC Method)	I_{FSM}	300							Amps
Rating for Fusing ($t < 8.3ms$)	I^2t	373							A ² S
Maximum Instantaneous Forward Voltage at 7.5A	V_F	1.1							Volts
Maximum DC Reverse Current at rated DC blocking voltage	$T_A=25^\circ C$	5.0							uAmps
	$T_A=125^\circ C$	0.5							mAmps
Isolation Voltage from case to lugs	V_{ISO}	2500							V_{AC}
Typical Thermal Resistance (Note 1,2)	$R_{\theta JC}$	2.0							$^\circ C/W$
Operating Temperature Range	T_J	-65 to +150							$^\circ C$
Storage Temperature Range	T_{STG}	-65 to +150							$^\circ C$

- Unit mounted on 9"x3.5"x4.6"(23x9x11.8mm) Al. finned plate.
- Bolt down on heat-sink with silicone thermal compound between bridge and mounting surface for maximum heat transfer efficiency with #10 screw.

Kingtronics® International Company

RATINGS AND CHARACTERISTIC CURVES

FIG.1-DERATING CURVE FOR
OUTPUT RECTIFIED CURRENT

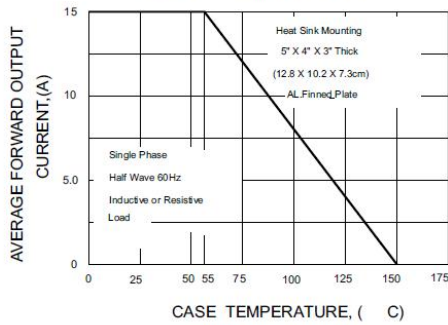


FIG.2-MAXIMUM NON-REPETITIVE PEAK
FORWARD SURGE CURRENT PER ELEMENT

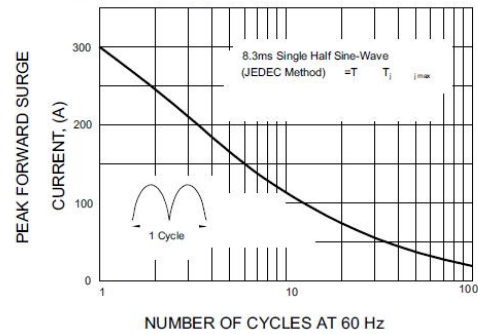


FIG.3-TYPICAL FORWARD CHARACTERISTICS
PER BRIDGE ELEMENT

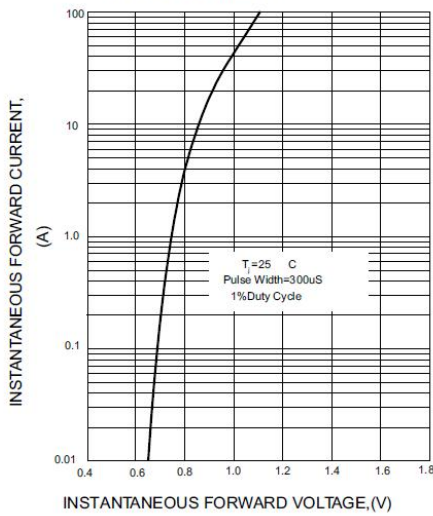


FIG.4-TYPICAL REVERSE CHARACTERISTICS
PER BRIDGE ELEMENT

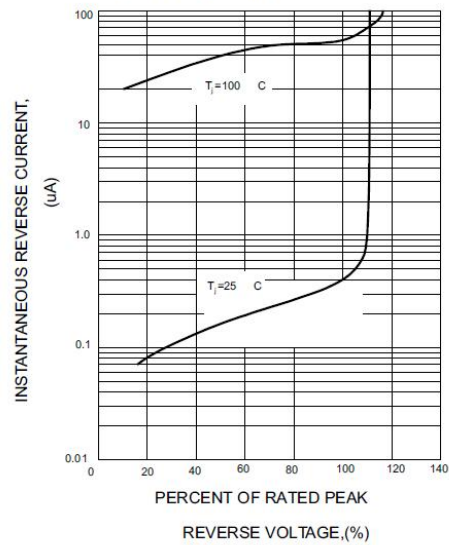


FIG.5-TYPICAL JUNCTION CAPACITANCE
PER BRIDGE ELEMENT

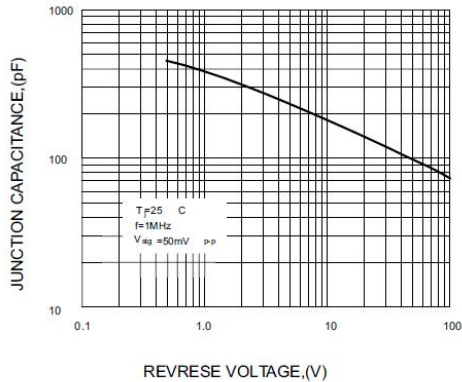
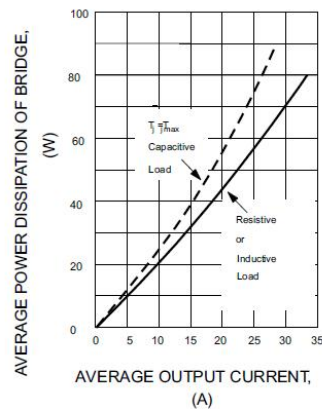


FIG.6-MAXIMUM POWER DISSIPATION



Note: Specifications are subject to change without notice.