

Test Report

No. CANEC0902652802

Date: 03 Jun 2009

Page 1 of 6

KINGTRONICS INTERNATIONAL COMPANY
UNIT I,4/F DORMIND INDUSTRIAL BUILDING
13 YIP FUNG STREET
FANLING
N.T. HONG KONG

The following sample(s) was/were submitted and identified on behalf of the clients as :
CA42 EPOXY-COATED SOLID DIP TANTALUM ELECTROLYTC CAPACITOR

SGS Job No. : 11733815 - SZ
Date of Sample Received : 20 May 2009
Testing Period : 20 May 2009 - 03 Jun 2009
Test Requested : Selected test(s) as requested by client.
Test Method : Please refer to next page(s).
Test Results : Please refer to next page(s).
Conclusion : Based on the performed tests on submitted sample(s), the results **comply with** the RoHS Directive 2002/95/EC and its subsequent amendments.

Signed for and on behalf of
SGS-CSTC Ltd.



Sunny Huang
Lab Sr. Supervisor

This document is issued by the Company under its General Conditions of Service printed overleaf or available on request and accessible at http://www.sgs.com/terms_and_conditions.htm. Attention is drawn to the limitation of liability, indemnification and jurisdiction issues defined therein. Any holder of this document is advised that information contained hereon reflects the Company's findings at the time of its intervention only and within the limits of Client's instructions, if any. The Company's sole responsibility is to its Client and this document does not exonerate parties to a transaction from exercising all their rights and obligations under the transaction documents. Any unauthorized alteration, forgery or falsification of the content or appearance of this document is unlawful and offenders may be prosecuted to the fullest extent of the law. Unless otherwise stated the results shown in this test report refer only to the sample(s) tested. This document cannot be reproduced except in full, without prior approval of the Company.

Test Report

No. CANEC0902652802

Date: 03 Jun 2009

Page 2 of 6

Test Results:

ID for specimen 1 : CAN09-026528.001
 Description for specimen 1 : Brown body w/ dk-brown printing

RoHS Directive 2002/95/EC

| Test Item(s) | Unit | Test Method (Reference) | Result | MDL | Limit |
|---|-------|-------------------------|--------|-----|-------|
| Cadmium (Cd) | mg/kg | IEC 62321:2008, ICP-OES | N.D. | 2 | 100 |
| Lead (Pb) | mg/kg | IEC 62321:2008, ICP-OES | N.D. | 2 | 1000 |
| Mercury (Hg) | mg/kg | IEC 62321:2008, ICP-OES | N.D. | 2 | 1000 |
| Hexavalent Chromium (CrVI) by alkaline extraction | mg/kg | IEC 62321:2008, UV-Vis | N.D. | 2 | 1000 |
| Sum of PBBs | mg/kg | - | N.D. | - | 1000 |
| Monobromobiphenyl | mg/kg | IEC 62321:2008, GC-MS | N.D. | 5 | |
| Dibromobiphenyl | mg/kg | IEC 62321:2008, GC-MS | N.D. | 5 | |
| Tribromobiphenyl | mg/kg | IEC 62321:2008, GC-MS | N.D. | 5 | |
| Tetrabromobiphenyl | mg/kg | IEC 62321:2008, GC-MS | N.D. | 5 | |
| Pentabromobiphenyl | mg/kg | IEC 62321:2008, GC-MS | N.D. | 5 | |
| Hexabromobiphenyl | mg/kg | IEC 62321:2008, GC-MS | N.D. | 5 | |
| Heptabromobiphenyl | mg/kg | IEC 62321:2008, GC-MS | N.D. | 5 | |
| Octabromobiphenyl | mg/kg | IEC 62321:2008, GC-MS | N.D. | 5 | |
| Nonabromobiphenyl | mg/kg | IEC 62321:2008, GC-MS | N.D. | 5 | |
| Decabromobiphenyl | mg/kg | IEC 62321:2008, GC-MS | N.D. | 5 | |
| Sum of PBDEs | mg/kg | - | N.D. | - | 1000 |
| Monobromodiphenyl ether | mg/kg | IEC 62321:2008, GC-MS | N.D. | 5 | |
| Dibromodiphenyl ether | mg/kg | IEC 62321:2008, GC-MS | N.D. | 5 | |
| Tribromodiphenyl ether | mg/kg | IEC 62321:2008, GC-MS | N.D. | 5 | |
| Tetrabromodiphenyl ether | mg/kg | IEC 62321:2008, GC-MS | N.D. | 5 | |
| Pentabromodiphenyl ether | mg/kg | IEC 62321:2008, GC-MS | N.D. | 5 | |
| Hexabromodiphenyl ether | mg/kg | IEC 62321:2008, GC-MS | N.D. | 5 | |
| Heptabromodiphenyl ether | mg/kg | IEC 62321:2008, GC-MS | N.D. | 5 | |
| Octabromodiphenyl ether | mg/kg | IEC 62321:2008, GC-MS | N.D. | 5 | |
| Nonabromodiphenyl ether | mg/kg | IEC 62321:2008, GC-MS | N.D. | 5 | |
| Decabromodiphenyl ether ## | mg/kg | IEC 62321:2008, GC-MS | N.D. | 5 | |

Note:

1. mg/kg = ppm
2. N.D. = Not Detected (< MDL)
3. MDL = Method Detection Limit
4. ## = The exemption of DecaBDE in polymeric application according 2005/717/EC was overruled by the European Court of Justice by its decision of 01.04.2008. Subsequently DecaBDE is included in the sum of PBDE after 01.07.2008
5. "-" = Not regulated

This document is issued by the Company under its General Conditions of Service printed overleaf or available on request and accessible at http://www.sgs.com/terms_and_conditions.htm. Attention is drawn to the limitation of liability, indemnification and jurisdiction issues defined therein. Any holder of this document is advised that information contained hereon reflects the Company's findings at the time of its intervention only and within the limits of Client's instructions, if any. The Company's sole responsibility is to its Client and this document does not exonerate parties to a transaction from exercising all their rights and obligations under the transaction documents. Any unauthorized alteration, forgery or falsification of the content or appearance of this document is unlawful and offenders may be prosecuted to the fullest extent of the law. Unless otherwise stated the results shown in this test report refer only to the sample(s) tested. This document cannot be reproduced except in full, without prior approval of the Company.

Test Report

No. CANEC0902652802

Date: 03 Jun 2009

Page 3 of 6

ID for specimen 2 : CAN09-026528.002
 Description for specimen 2 : Silvery metal pin

RoHS Directive 2002/95/EC

| Test Item(s) | Unit | Test Method (Reference) | Result | MDL | Limit |
|--|-------|-------------------------|----------|-----|-------|
| Cadmium (Cd) | mg/kg | IEC 62321:2008, ICP-OES | N.D. | 2 | 100 |
| Lead (Pb) | mg/kg | IEC 62321:2008, ICP-OES | N.D. | 2 | 1000 |
| Mercury (Hg) | mg/kg | IEC 62321:2008, ICP-OES | N.D. | 2 | 1000 |
| Hexavalent Chromium (CrVI) by boiling water extraction | - | IEC 62321:2008, UV-Vis | Negative | ◇ | # |

Note:

1. mg/kg = ppm
2. N.D. = Not Detected (< MDL)
3. MDL = Method Detection Limit
4. ◇ = Spot test:

Negative = Absence of CrVI coating, Positive = Presence of CrVI coating;

(The tested sample should be further verified by boiling water extraction method if the spot test result is negative or cannot be confirmed.)

Boiling water extraction:

Negative = Absence of CrVI coating

Positive = Presence of CrVI coating; the detected concentration in boiling water extraction solution is equal or greater than 0.02 mg/kg with 50 cm² sample surface area.

Storage conditions and production date of the tested sample are unavailable and thus results of Cr(VI) represent status of the sample at the time of testing.

5. # = Positive indicates the presence of CrVI on the tested area.

Negative indicates the absence of CrVI on the tested area.

6. " " = Not regulated

Remark 1:As requested by client, the test was conducted as whole / part sample, for the specimen 1 can't be disjointed.

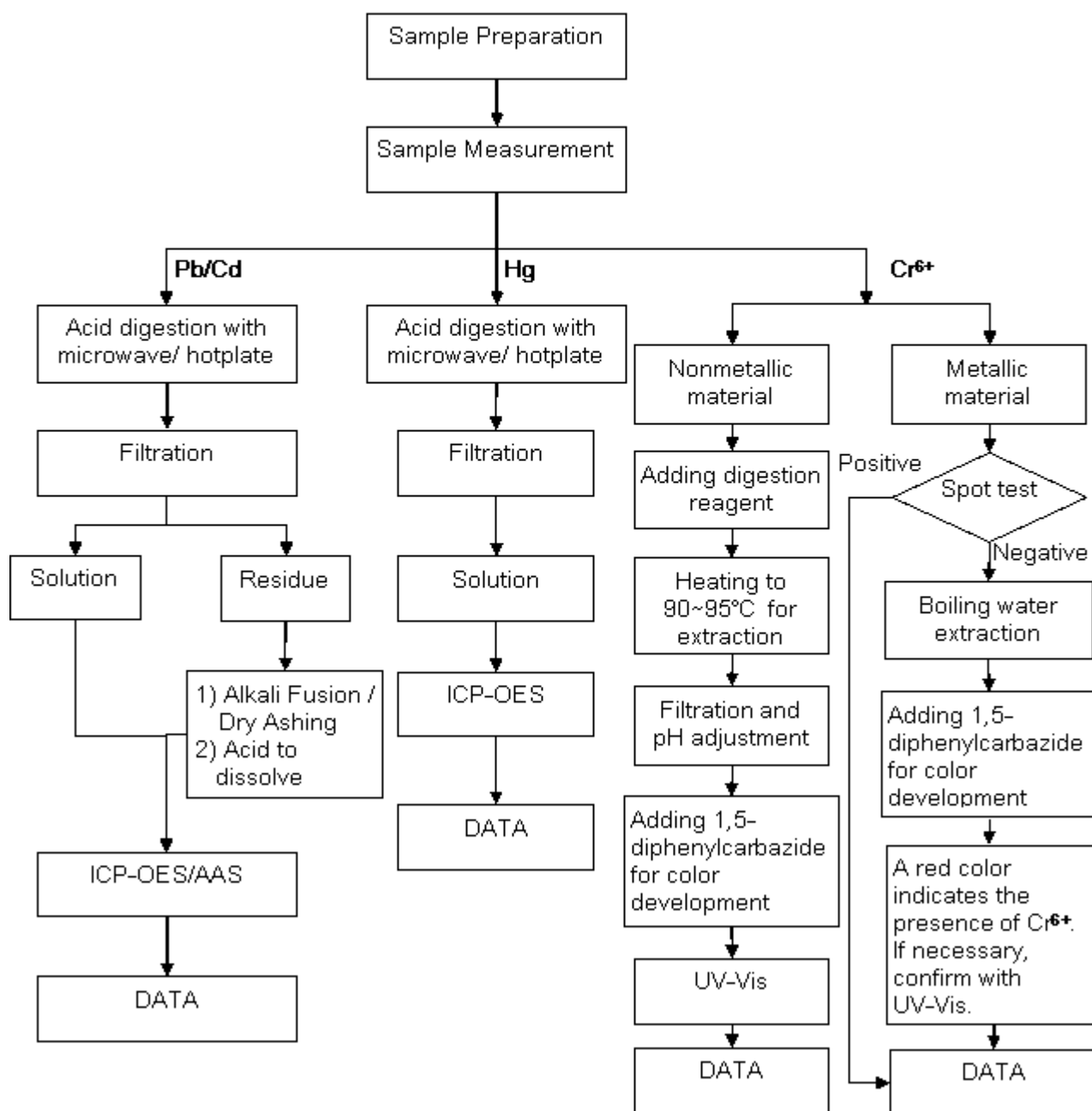
Remark 2:Results & photo(s) of this report refer to test report CANEC0902652801.

This document is issued by the Company under its General Conditions of Service printed overleaf or available on request and accessible at http://www.sgs.com/terms_and_conditions.htm. Attention is drawn to the limitation of liability, indemnification and jurisdiction issues defined therein. Any holder of this document is advised that information contained hereon reflects the Company's findings at the time of its intervention only and within the limits of Client's instructions, if any. The Company's sole responsibility is to its Client and this document does not exonerate parties to a transaction from exercising all their rights and obligations under the transaction documents. Any unauthorized alteration, forgery or falsification of the content or appearance of this document is unlawful and offenders may be prosecuted to the fullest extent of the law. Unless otherwise stated the results shown in this test report refer only to the sample(s) tested. This document cannot be reproduced except in full, without prior approval of the Company.

ATTACHMENTS

Testing Flow Chart

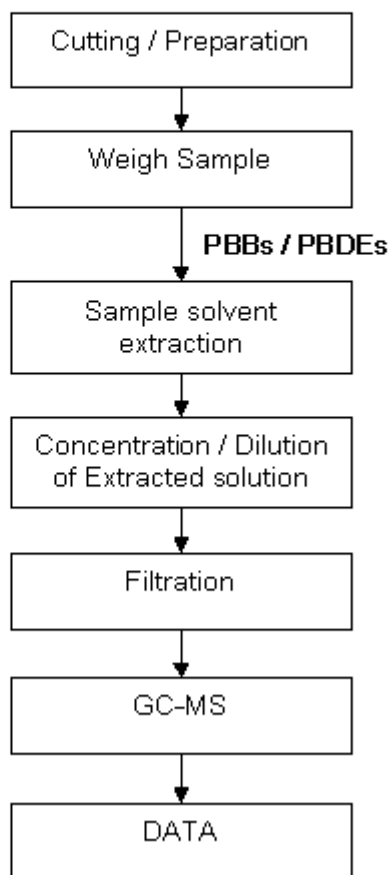
- 1) Name of the person who made measurement: Luke Xu / Lily Lee
- 2) Name of the person in charge of measurement: Adams Yu / Leo Wang



This document is issued by the Company under its General Conditions of Service printed overleaf or available on request and accessible at http://www.sgs.com/terms_and_conditions.htm. Attention is drawn to the limitation of liability, indemnification and jurisdiction issues defined therein. Any holder of this document is advised that information contained hereon reflects the Company's findings at the time of its intervention only and within the limits of Client's instructions, if any. The Company's sole responsibility is to its Client and this document does not exonerate parties to a transaction from exercising all their rights and obligations under the transaction documents. Any unauthorized alteration, forgery or falsification of the content or appearance of this document is unlawful and offenders may be prosecuted to the fullest extent of the law. Unless otherwise stated the results shown in this test report refer only to the sample(s) tested. This document cannot be reproduced except in full, without prior approval of the Company.

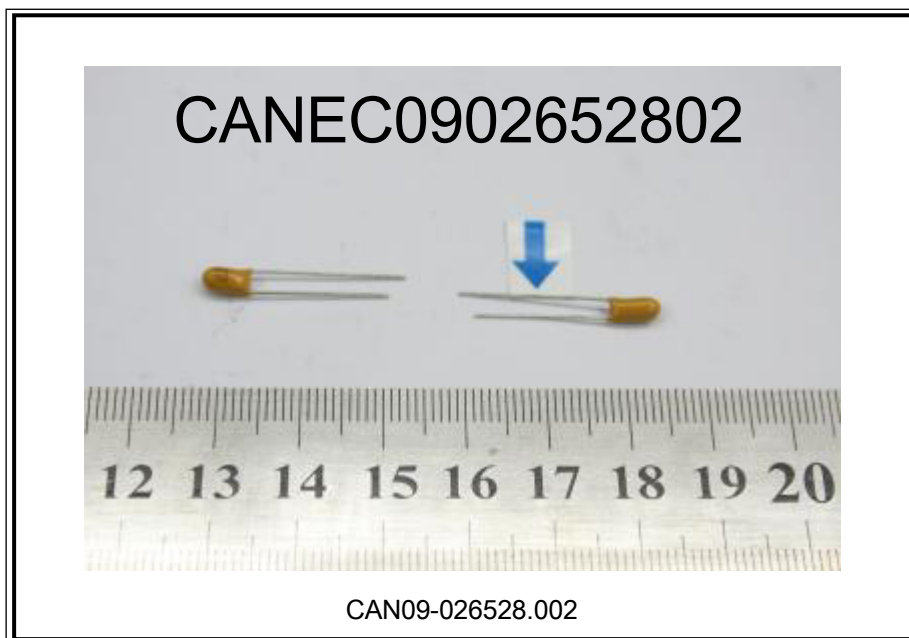
Testing Flow Chart

- 1) Name of the person who made measurement: Lina Tang
- 2) Name of the person in charge of measurement: Tina Zhao



This document is issued by the Company under its General Conditions of Service printed overleaf or available on request and accessible at http://www.sgs.com/terms_and_conditions.htm. Attention is drawn to the limitation of liability, indemnification and jurisdiction issues defined therein. Any holder of this document is advised that information contained hereon reflects the Company's findings at the time of its intervention only and within the limits of Client's instructions, if any. The Company's sole responsibility is to its Client and this document does not exonerate parties to a transaction from exercising all their rights and obligations under the transaction documents. Any unauthorized alteration, forgery or falsification of the content or appearance of this document is unlawful and offenders may be prosecuted to the fullest extent of the law. Unless otherwise stated the results shown in this test report refer only to the sample(s) tested. This document cannot be reproduced except in full, without prior approval of the Company.

Sample photo:



SGS authenticate the photo on original report only
 *** End of Report ***

This document is issued by the Company under its General Conditions of Service printed overleaf or available on request and accessible at http://www.sgs.com/terms_and_conditions.htm. Attention is drawn to the limitation of liability, indemnification and jurisdiction issues defined therein. Any holder of this document is advised that information contained hereon reflects the Company's findings at the time of its intervention only and within the limits of Client's instructions, if any. The Company's sole responsibility is to its Client and this document does not exonerate parties to a transaction from exercising all their rights and obligations under the transaction documents. Any unauthorized alteration, forgery or falsification of the content or appearance of this document is unlawful and offenders may be prosecuted to the fullest extent of the law. Unless otherwise stated the results shown in this test report refer only to the sample(s) tested. This document cannot be reproduced except in full, without prior approval of the Company.

