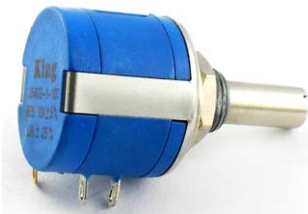


RKT-3540 WIREWOUND ELEMENT / RKT-3541 PRECISION ELEMENT



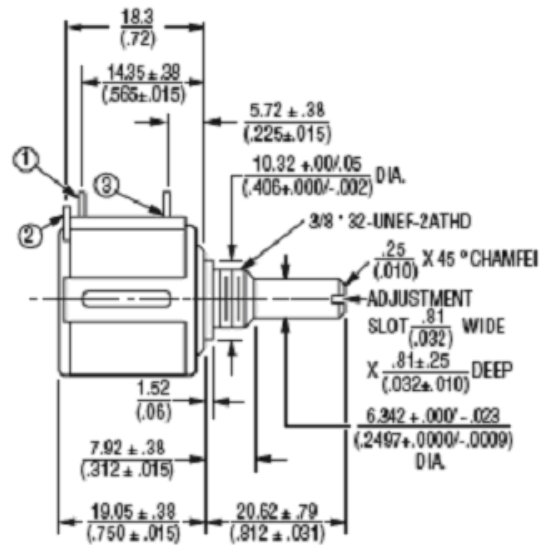
- At room ambient: +25°C nominal and 50% relative Humldity nominal, except as noted.
- Consult manufacturer for complete specification details

Electrical Characteristics	RKT-3540 Wirewound Element	RKT-3541 Precision Element
Standard Resistance Range	100 to 100K ohms	1K to 100K ohms
Total Resistance Tolerance	±5%	±10%
Independent Linearity	±0.25%	±0.25%
Effective Electrical Angle	3600°C +10°C, 0°C	3600°C +10°C, 0°C
Absolute Minimum Resistance/ Minimum Voltage	1 ohm or 0.2% max (Whichever is greater)	0.2% max
Noise/ Output Smoothness	100 ohms ENR max	0.1%
Dielectric Withstanding Voltage (MIL-STD-202, Method 301) Sea Level	1000 VAC minimum	1000 VAC minimum
Power Rating (Voltage Limited By Power Dissipation or 447VAC, Whichever is Less)		
+70°C	2 watts	2 watts
+125°C	0 watt	0 watt
Insulation Resistance (500 VDC)	1000 meg ohms min	1000 meg ohms min
Resolution	See recommended part#	Essentially infinite

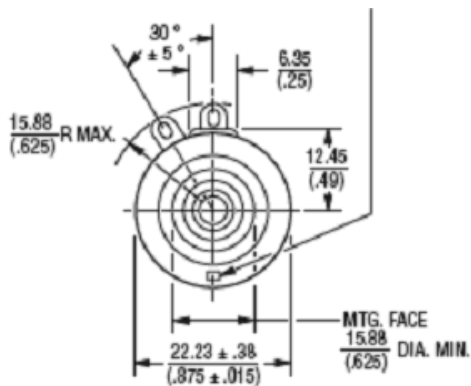
Environmental Characteristics	RKT-3540 Wirewound Element	RKT-3541 Precision Element
Operating Temperature Range	+1°C to +125°C	+1°C to +125°C
Storage Temperature Range	-55°C to +125°C	-55°C to +125°C
Temperature Coefficient Over Storage Temperature Range	±50ppm/°C maximum/ unit	±100ppm/°C maximum/ unit
Vibration	15G	15G
Wiper Bounce	0.1 millisecond maximum	0.1 millisecond maximum
Shock	50G	50G
Wiper Bounce	0.1 millisecond maximum	0.1 millisecond maximum
Load Life	1000 hours, 2 watts	1000 hours, 2 watts
Total Resistance Shift	±2%	±5%
Rotational Life (No Load)	1,000,000 shaft revolutions	5,000,000 shaft revolutions
Total Resistance Shift	±5% maximum	±5% maximum
Moisture Resistance (MIL-STD-202, Method 103, Condition B)		
Total Resistance Shift	±2% maximum	±5% maximum
IP Rating	IP 40	IP 40

Mechanical Characteristics	
Stop Strength	53 N-cm (75 oz-in) minimum
Mechanical Angle	3600°C +10°C, -0°C
Torque (Starting & Running)	0.35 N-cm (0.5 oz-in) max
Mounting	170-200 N-cm (15-18 lb.-in.) max
Shaft Runout	0.08mm (0.003 in.) T.I.R
Lateral Runout	0.13mm (0.005 in.) T.I.R
Shaft End Play	0.30mm (0.012 in.) T.I.R
Shaft Radial Play	0.08mm (0.003 in.) T.I.R
Pilot Diameter Runout	0.08mm (0.003 in.) T.I.R
Backlash	1.0°C maximum
Weight	Approximately 21gm
Terminals	Gold-plated solder lugs
Soldering Condition Manual Soldering	96.5Sn/ 3.0Ag/ 0.5Cu solid wire or no-clean rosin cored wire; 370°C (700°C) max. for 3 seconds
Wave Soldering	96.5Sn/ 3.0Ag/ 0.5Cu solder with no-clean flux; 260°C (500°C) max. for 5 seconds
Wash Processes	Not recommended
Marking	Manufacturer's name and part number, resistance value and tolerance, linearity tolerance, wiring diagram and date code
Ganging (Multiple Section Pots)	2 cups maximum
Hardware	One lockwasher (H-37-2) and one mounting nut (H-38-2) is shipped with each potentiometer

Common Dimensions RKT-3540S-1/ 3541H-1



OPTIONAL ANTIROTATION LUG
(-91) 1.42x0.50 ON 7.4 RADIUS.
LENGTH 1.27 FROM MOUNTING SURFACE.
(SUGGESTED PANEL HOLE 1.6 DIA.)



TOLERANCE: EXCEPT WHERE NOTED
DECIMALS: XX± $\frac{0.25}{(0.010)}$ XXX± $\frac{0.13}{(0.005)}$
FRACTIONS: ±1/64
DIMENSIONS: $\frac{MM}{(IN.)}$

Standard Resistance table

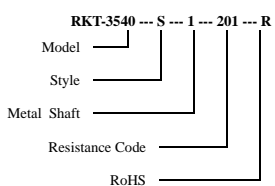
RKT-3540S-1

Resistance (Ohms)	Resistance Code	Resolution (%)
200	201	0.042
500	501	0.031
1,000	102	0.027
2,000	202	0.021
5,000	502	0.021
10,000	103	0.019
20,000	203	0.014
50,000	503	0.011
100,000	104	0.008

RKT-3541H-1

Resistance (Ohms)	Resistance Code
1,000	102
2,000	202
5,000	502
10,000	103
20,000	203
50,000	503
100,000	104

How to Order



BOLDFACE LISTINGS ARE IN STOCK AND
READILY AVAILABLE THROUGH DISTRIBUTION

FOR SERVO MOUNT VERSION AND OTHER
OPTIONS CONSULT FACTORY.

FOR OTHER OPTIONS CONSULT FACTORY.

ROHS IDENTIFIER:
L = COMPLIANT
BLANK = NON-COMPLIANT

Note: Specification are subject to change without notice.

Kingtronics International Company

Tel: (852) 8106 7033 Fax: (852) 8106 7099

Website: www.kingtronics.com Email: info@kingtronics.com