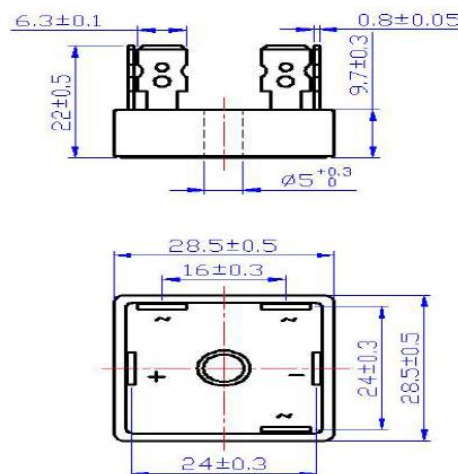


Kingtronics®**SKBPC3508 THRU
SKBPC3516****THREE-PHASE BRIDGE RECTIFIER**
VOLTAGE RANGE 800 to 1600 Volts CURRENT 35 Ampere**FEATURES**

Integrally molding heatsinks provide very low thermal resistance for maximum heat dissipation
Surge overload rating to 400 amperes
High temperature soldering guaranteed:
260°C/10 second, at 5 lbs. (2.3kg) tension.

MECHANICAL DATA

Case: Epoxy, molded plastic with heatsink integrally mounted in the bridge encapsulation.
Mounting Position: Bolt down on heatsink with silicone thermal compound between bridge and mounting surface for maximum heat transfer efficiency
Mounting Torque: 20 in. lbs max.
Weight:0.706 ounce, 20 grams

SKBPC**Dimensions in inches and (millimeters)****MAXIMUM RATINGS AND ELECTRICAL CHARACTERISTICS**

Ratings at 25°C ambient temperature unless otherwise specified ,
Single phase, half wave, 60Hz, resistive or inductive load.
For capacitive load derate current by 20%

	SYMBOLS	SKBPC3508	SKBPC3512	SKBPC3516	UNIT
Peak Repetitive Reverse Voltage	V_{RRM}	800	1200	1600	Volts
Working Peak Reverse Voltage	I_{RWM}	800	1200	1600	Volts
Maximum DC Blocking Voltage	V_{DC}	800	1200	1600	Volts
Maximum Average Forward Rectified Output Current, at $T_C=55^\circ\text{C}$ (Note 2)	$I_{(AV)}$	35			Amps
Peak Forward Surge Current 8.3ms single half sine-wave superimposed on rated load(JEDEC Method)	I_{FSM}	400			Amps
Rating for Fusing ($t<8.3\text{ms}$)	I^2T	664			A^2S
Maximum Instantaneous Forward Voltage drop per bridge element at 17.5A	V_F	1.2			Volts
Maximum DC Reverse Current at rated DC blocking voltage per element $T_A=25^\circ\text{C}$	I_R	5.0			uAmps
Isolation Voltage from case to leads	V_{iso}	2500			VAC
Typical Thermal Resistance per Element	$R_{\theta JC}$	2.2			$^\circ\text{C}/\text{W}$
Operating Temperature Range	T_J	-55 to + 150			$^\circ\text{C}$
Storage Temperature Range	T_{STG}	-55 to + 150			$^\circ\text{C}$

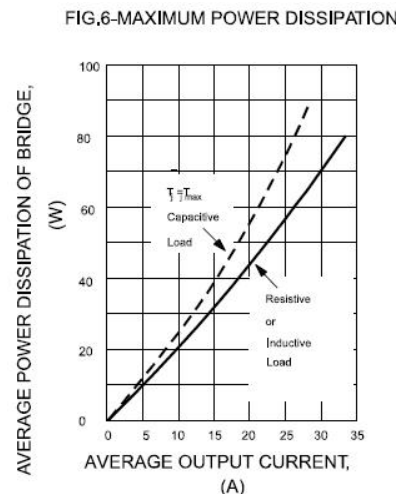
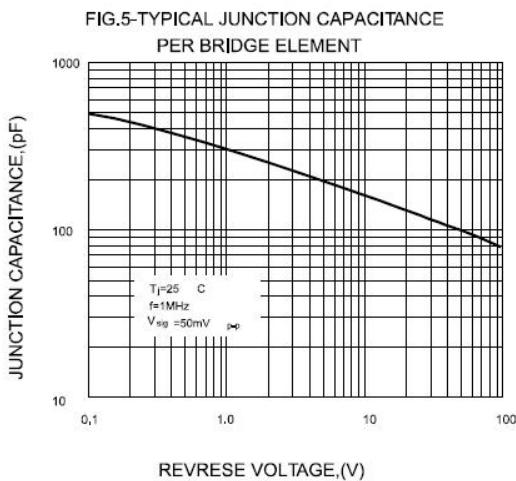
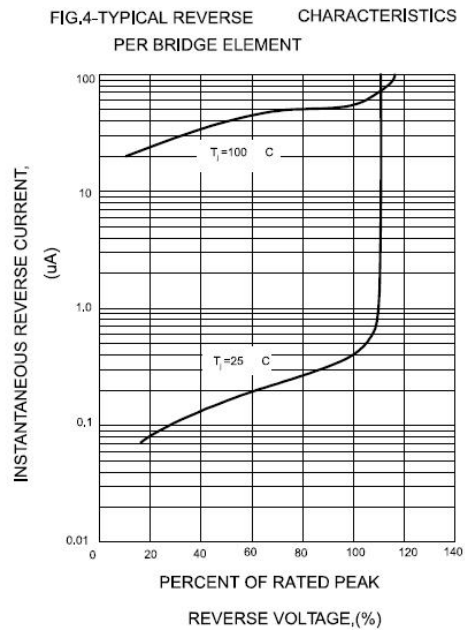
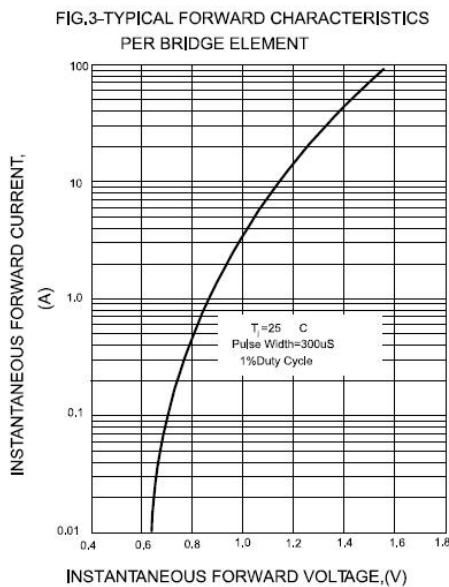
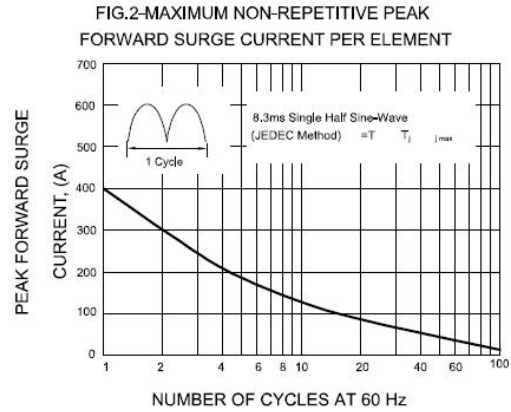
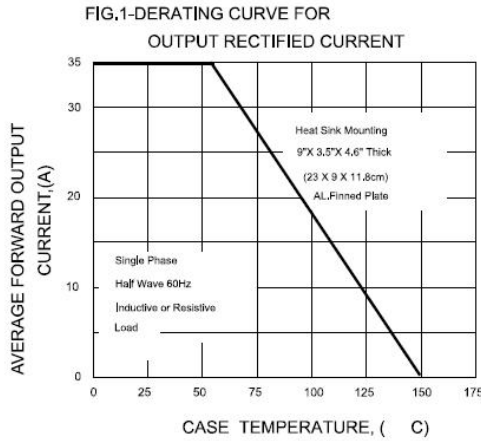
NOTES:

- 1.Measured at 1.0 MHz and applied reverse voltage of 4.0 Volts.
- 2.Unit mounted on 11.8" x 11.8" x 0.6" thick (300x300x15mm) Copper plate

Kingtronics® International Company

Kingtronics®

SKBPC3508 THRU SKBPC3516



Note: Specifications are subject to change without notice.

Kingtronics® International Company