

Kingtronics®**GBPC35005 THRU
GBPC3510**

SINGLE-PHASE BRIDGE RECTIFIER GLASS PASSIVATED BRIDGE RECTIFIERS
REVERSE VOLTAGE 50 to 1000 Volts FORWARD CURRENT 35 Ampere

FEATURES

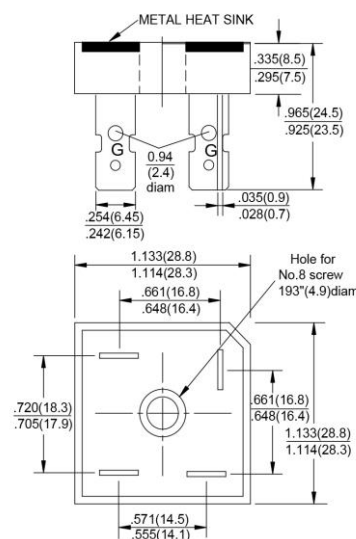
Rating to 1000V PRV
 High efficiency
 Glass passivated chip junction
 Electrically isolated metal case for maximum heat dissipation
 The plastic material has UL flammability classification 94V-0
 Electrically isolated base-2500 Volts

MECHANICAL DATA

Case : Molded plastic with Heatsink internally mounted in the bridge encapsulation
 Polarity: As marked on Body
 Mounting : Hole for # 10 screw
 Weight : 0.55 ounces , 15.6 grams (terminal)

MAXIMUM RATINGS AND ELECTRICAL CHARACTERISTICS

**Ratings at 25°C ambient temperature unless otherwise specified ,
 Single phase, half wave, 60Hz, resistive or inductive load.
 For capacitive load derate current by 20%**

GBPC

Dimensions in inches and (millimeters)

PARAMETER	SYMBOL	GBPC 35005	GBPC 3501	GBPC 3502	GBPC 3504	GBPC 3506	GBPC 3508	GBPC 3510	UNIT
Maximum Recurrent Peak Reverse Voltage	V_{RRM}	50	100	200	400	600	800	1000	V
Maximum RMS Voltage	V_{RMS}	35	70	140	280	420	560	700	V
Maximum DC Blocking Voltage	V_{DC}	50	100	200	400	600	800	1000	V
Maximum Average Forward(with heatsink Note 2) Rectified Current @ $T_C=110^{\circ}C$ (without heatsink)	$I_{(AV)}$	35.5							A
Peak Forward Surge Current 8.3ms single half sine-wave superimposed on rated load	I_{FSM}	400							A
Maximum forward Voltage at 17.5A DC	V_F	1.1							V
Maximum DC Reverse Current @ $T_J=25^{\circ}C$ at Rated DC Blocking voltage @ $T_J=125^{\circ}C$	I_R	500							μA
I^2t Rating for fusing($t<8.3ms$)	I^2t	660							A^2S
Typical Junction Capacitance per element(Note 1)	C_J	300							pF
Typical Thermal Resistance (Note 2)	$R_{\theta JC}$	1.4							$^{\circ}C/W$
Operating Temperature Range	T_J	-55 to +150							$^{\circ}C$
Storage Temperature Range	T_{STG}	-55 to +150							$^{\circ}C$

1- Measured at non-repetitive, for greater than 1ms and less than 8.3ms.

2- Measured at 1.0M Hz and applied reversed voltage of 4.0 VDC.

3-Device mounted on 300mm x 300mm x 1.6mm Cu Plate Heatsink.

Kingtronics® International Company

Website: www.kingtronics.com

Email: info@kingtronics.com

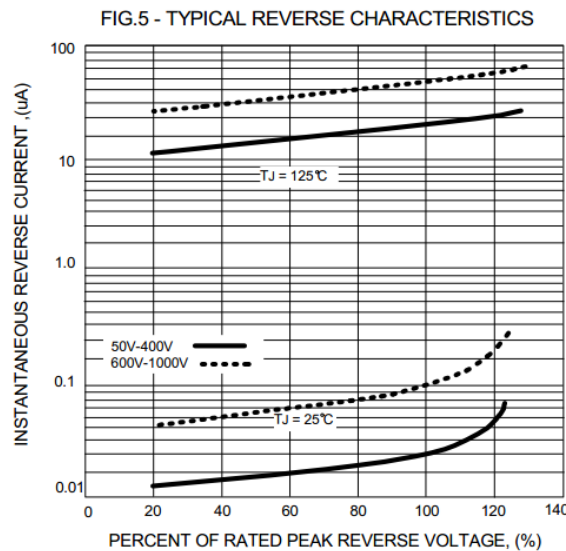
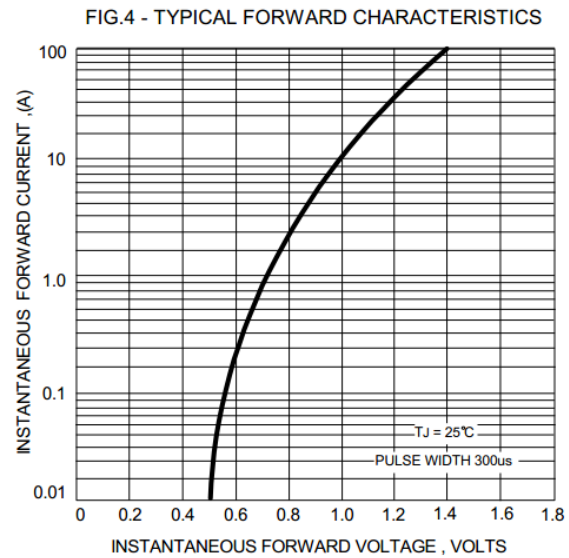
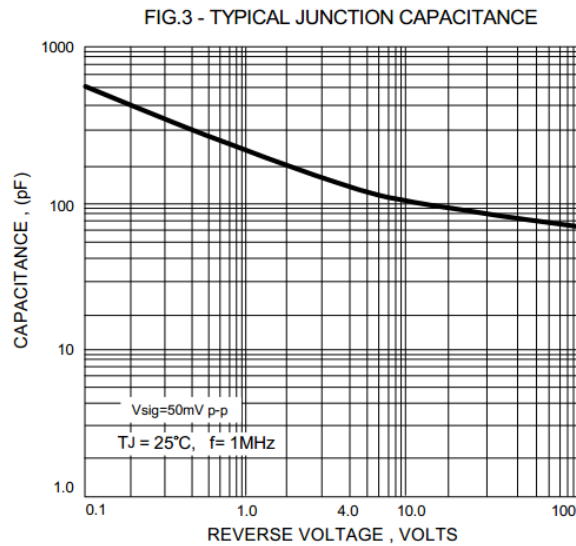
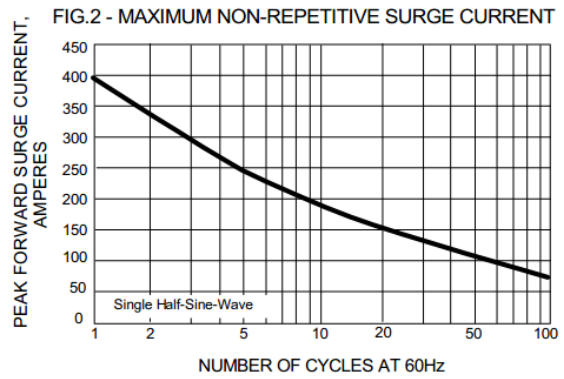
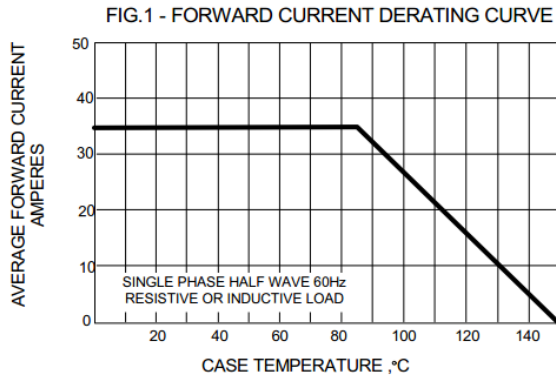
Tel: (852) 8106 7033

Fax: (852) 8106 7099

Kingtronics®

GBPC35005 THRU GBPC3510

RATINGS AND CHARACTERISTIC CURVES



Note: Specifications are subject to change without notice.

Kingtronics® International Company